



AREA PERFORMANCE PLANNING

SPARTANBURG COUNTY COUNCIL

- Vision:

To be a preferred destination for individuals, families and businesses to live, learn, play and invest.

- Mission:

To provide a foundation for superior quality of life for residents, unlimited opportunities for business and an exceptional learning environment for education **through purposeful planning, investment and use of resources.**



AREA PERFORMANCE PLANNING

- **How do we strike a balance between:**
 - superior quality of life for residents that we now enjoy
and
 - growth and development that provides unlimited economic development opportunities.
- **How can we protect:**
 - property owners and destinations places—historical, natural, cultural, etc.
while
 - simultaneously encouraging development of sound economically driven growth.

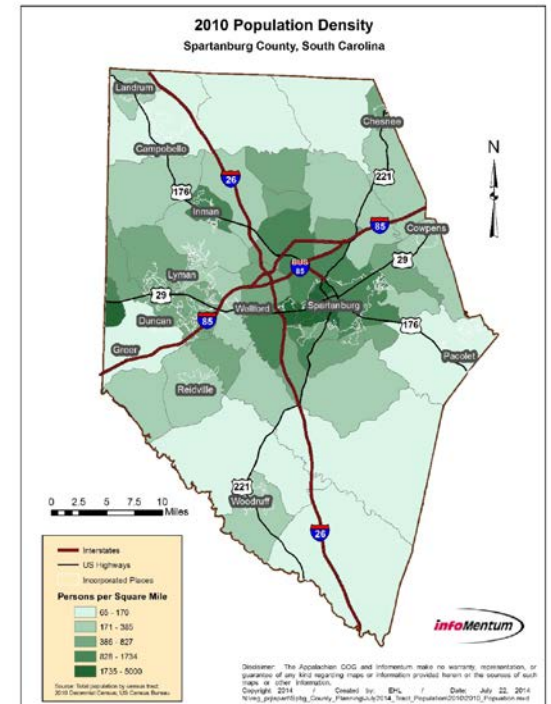
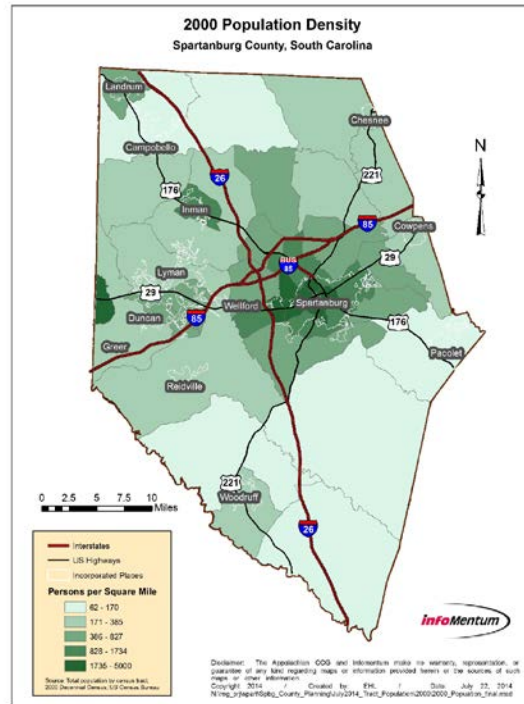
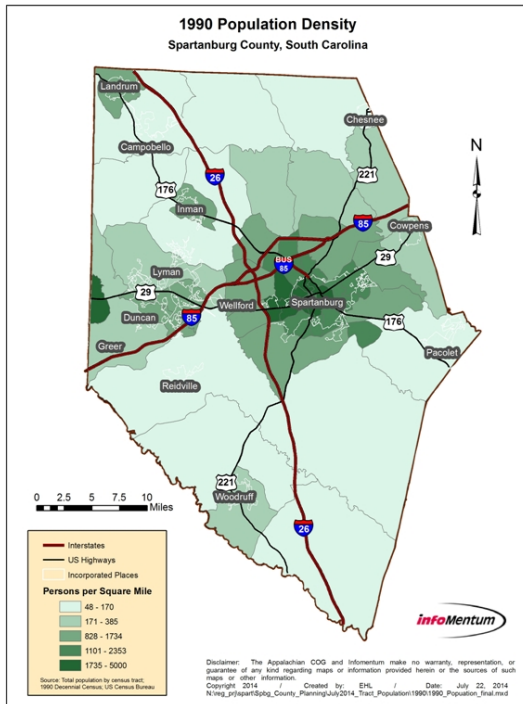


AREA PERFORMANCE PLANNING

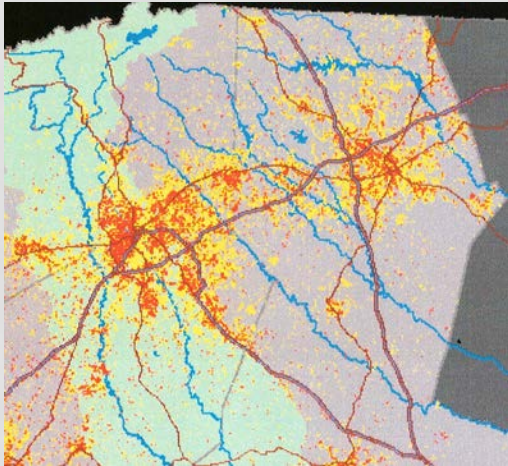
- A unique plan for individual Districts **USING**
 - Growth trajectories **as the guide**
and
 - Road classifications **as the methodology** of performance planning.
- Provides
 - flexibility, rationality, transparency and accountability
 - accommodates market principles while balancing private property rights with environmental issues.



AREA PERFORMANCE PLANNING GROWTH TRAJECTORIES

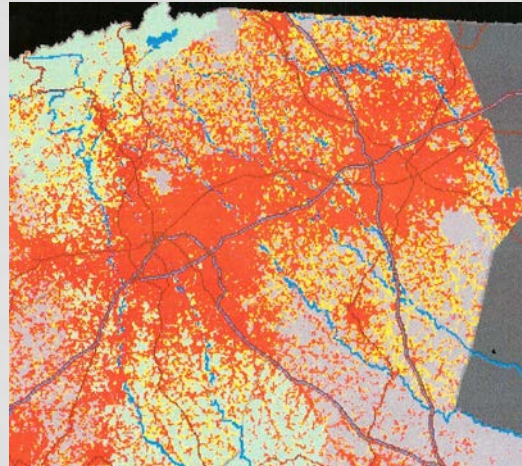


AREA PERFORMANCE PLANNING GROWTH TRAJECTORIES



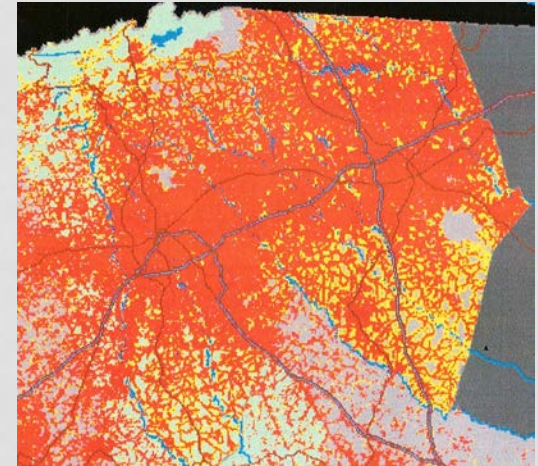
Urban Growth for
Upstate SC 1990-
2000

(Strom Thurmond Institute)



Urban Growth for
Upstate SC 2010-
2020

(Strom Thurmond Institute)



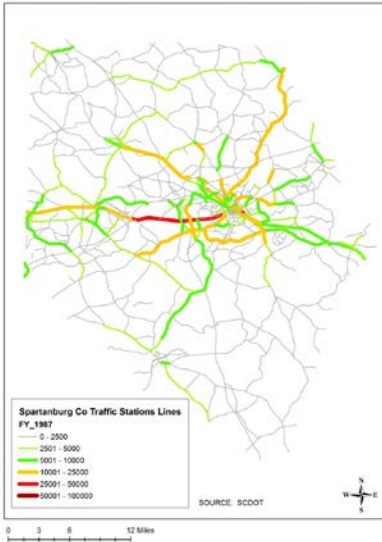
Urban Growth for
Upstate SC 2020-
2030

(Strom Thurmond Institute)



GROWTH TRAJECTORIES ROAD CONGESTION

Spartanburg County Traffic Congestion Map FY 1987



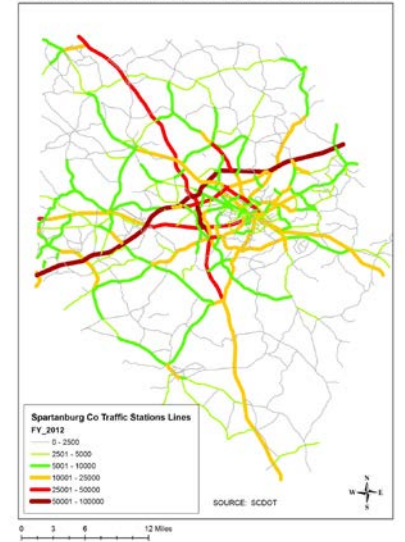
Spartanburg County Traffic Congestion Map FY 1997



Spartanburg County Traffic Congestion Map FY 2007



Spartanburg County Traffic Congestion Map FY 2012

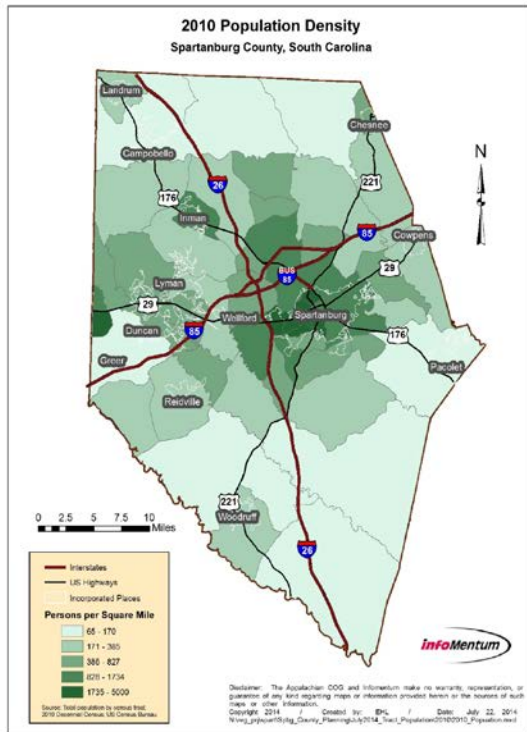


ROAD CLASSIFICATIONS

- What are the road classifications and how do they drive APP methodology?
- There are three (3) general/broad based road classifications:
 - **Arterial** are major through roads that are expected to carry large volumes of traffic.
 - **Collectors** collect traffic from local roads, and distribute it to arterials. Traffic using a collector is usually going to or coming from somewhere nearby.
 - **Local** have the lowest speed limit, and carry low volumes of traffic and in some cases may be unpaved.
- The goal is to encourage growth where it exists using the road patterns as the methodology for planning and to make accommodations where growth is incompatible.



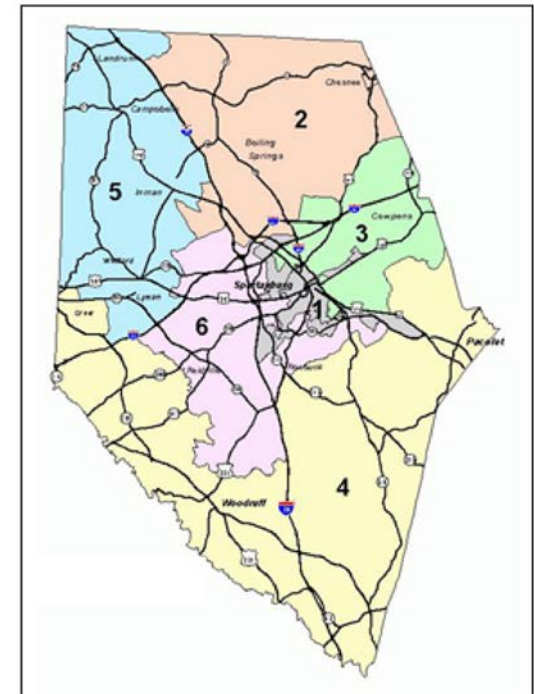
COMPARISON - POPULATION DENSITY, CONGESTION AND COUNCIL DISTRICTS



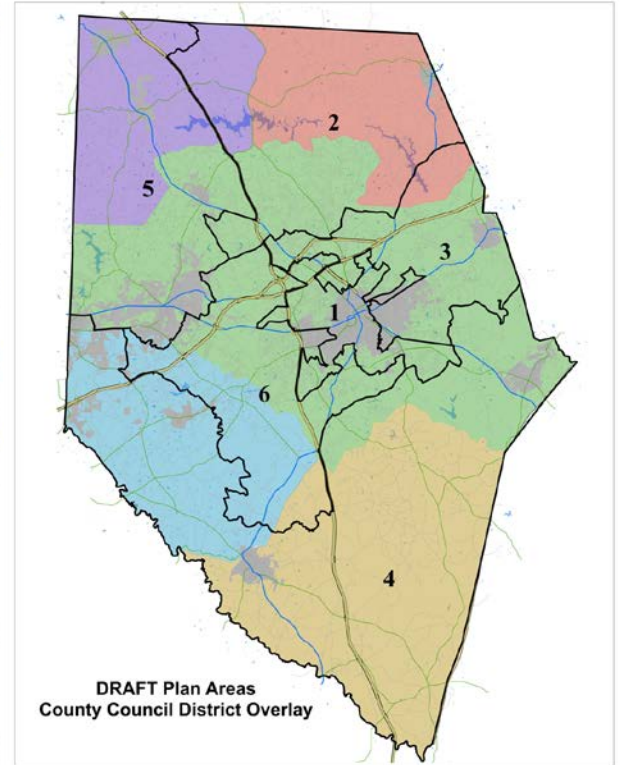
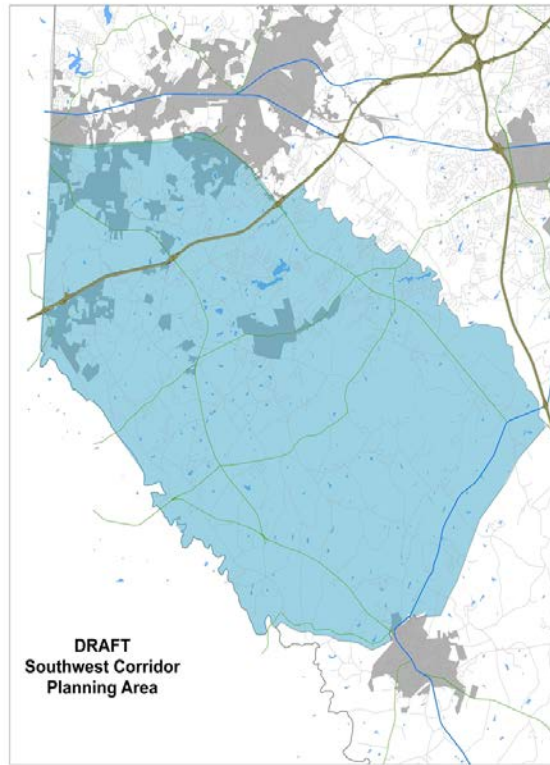
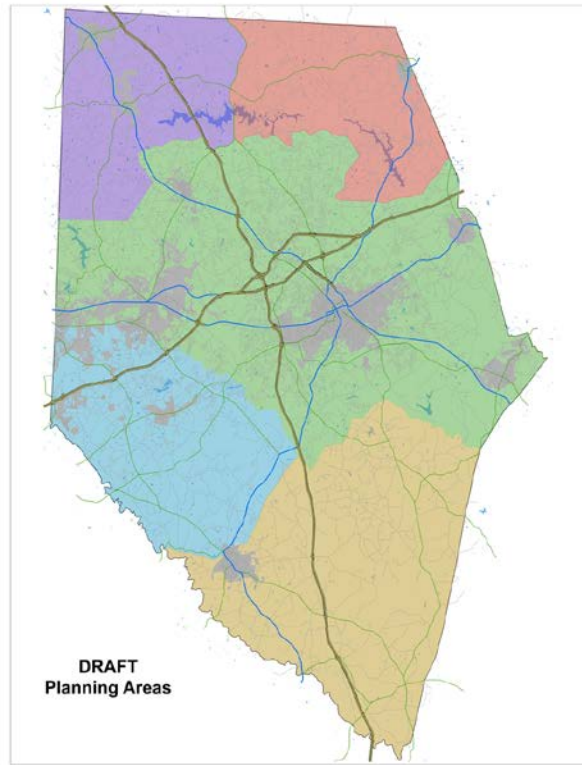
Spartanburg County Traffic Congestion Map FY 2012



Spartanburg County Council Districts



PROPOSED PLANNING AREA(S)





AREA PERFORMANCE PLANNING